

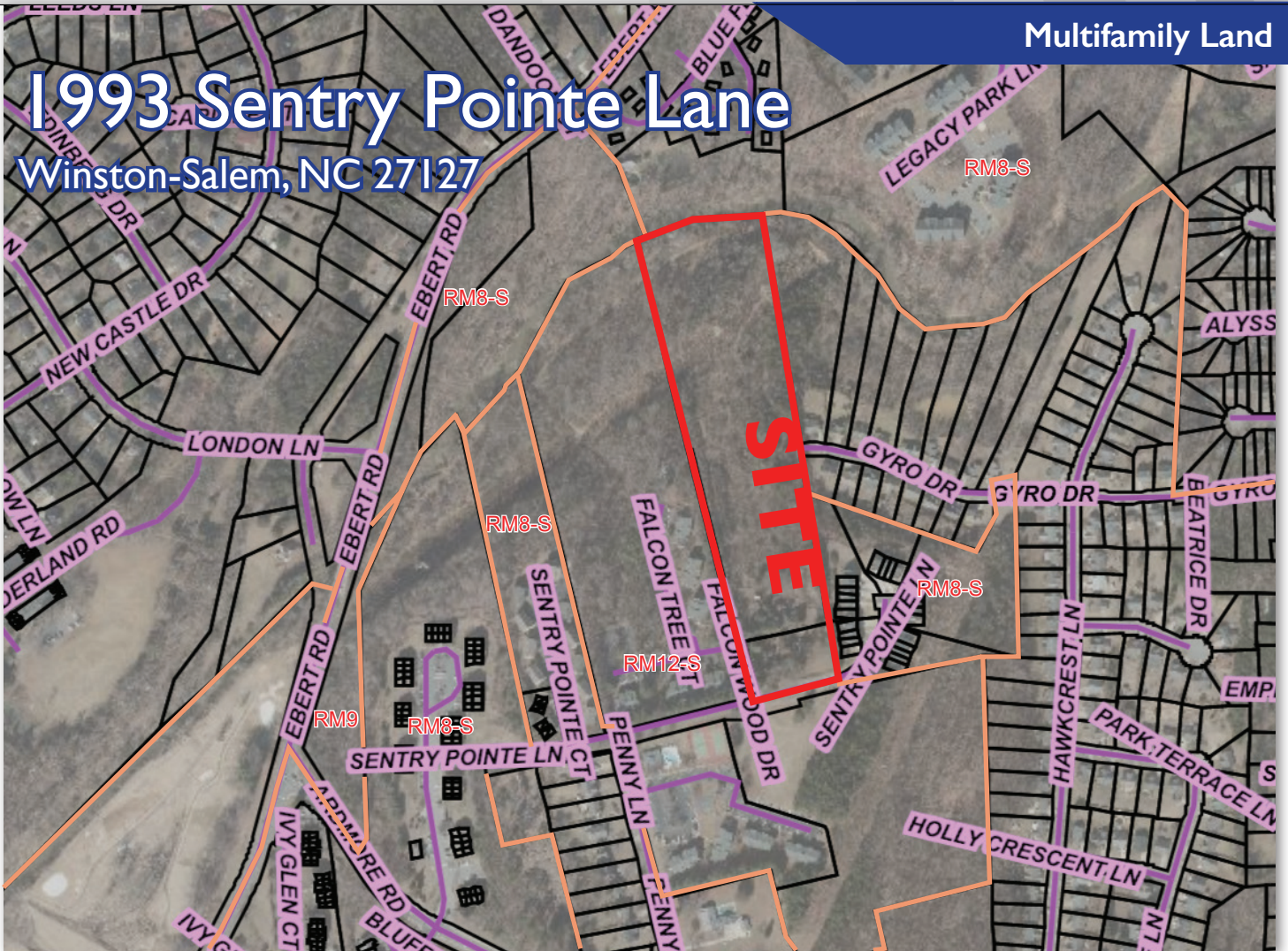
M E R I D I A N

147 S. CHERRY STREET, SUITE 200 | WINSTON-SALEM, NC 27101 | P 336.722.1986 | F 336.723.3173 | MERIDIANREALTY.COM

Multifamily Land

# 1993 Sentry Pointe Lane

Winston-Salem, NC 27127



- 3 parcels totaling 11.16± acres
- Comes with 2,346± SF home built in 1983
- Located between Ardmore Vista Townhomes and Falcon Point apartments
- 270±' of road frontage
- Currently Zoned RS-9 but surrounded by RM Zoning
- Beautiful, wooded acreage with gently sloping topography

For more information:

**Charlie H. Fulk, CCIM**

Cfulk@meridianrealty.com

336.480.2089

**FOR SALE: \$525,000**




WWW.MERIDIANREALTY.COM



SITE PHOTOS



DEMOGRAPHICS

	1mi	3mi	5mi
 POPULATION	8,830	62,481	147,177
 HOUSEHOLDS	62,481	27,325	61,722
 HOUSEHOLD INCOME	\$60,795	\$61,713	\$70,877

PROPERTY LOCATION



No warranty or representation (express or implied) is made as to the accuracy or completeness of the information set forth herein. All information is submitted subject to errors, omissions, change of price, prior lease or sale, and withdrawal without notice. All marketing material produced by the Meridian Realty Group is proprietary. Any reproduction is expressly prohibited.



THE MERIDIAN REALTY GROUP | 147 S. CHERRY STREET, SUITE 200 | WINSTON-SALEM, NC 27101

P 336.722.1986 | F 336.723.3173

WWW.MERIDIANREALTY.COM