



M E R I D I A N

147 S. CHERRY STREET, SUITE 200 | WINSTON-SALEM, NC 27101 | P 336.722.1986 | F 336.723.3173 | MERIDIANREALTY.COM

Residential Development Opportunity

# 0 Riverside Drive

Lexington, NC 27292



Great opportunity to develop 81.00± AC on High Rock Lake. High Rock Lake was built in 1929 and is currently the second largest lake in NC. Riverside Drive offers a unique development opportunity that features waterfront views while being centrally located between Charlotte and the Triad.

For more information:

**Spencer T. Bennett, CCIM**  
Spencer@meridianrealty.com  
336.480.2327

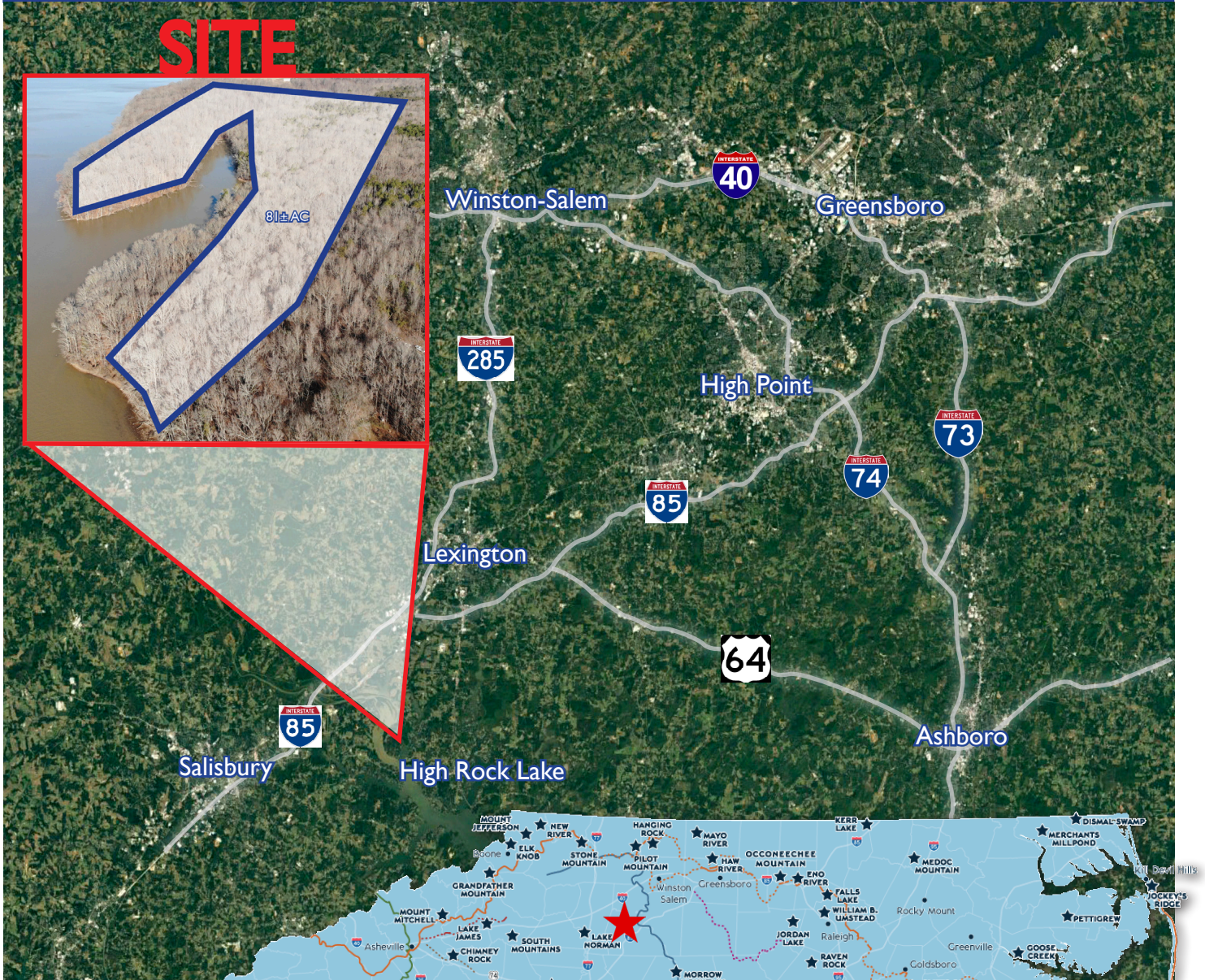
**FOR SALE: \$1,900,000.00**

**William T. Bartholomew, Jr., CCIM**  
William@meridianrealty.com  
336.480.2335

WWW.MERIDIANREALTY.COM



REGIONAL AERIAL



- 81± AC
- Waterfront views on High Rock Lake
- Zoned RS
- For Sale: \$1,900,000.00

No warranty or representation (express or implied) is made as to the accuracy or completeness of the information set forth herein. All information is submitted subject to errors, omissions, change of price, prior lease or sale, and withdrawal without notice. All marketing material produced by the Meridian Realty Group is proprietary. Any reproduction is expressly prohibited.



THE MERIDIAN REALTY GROUP | 147 S. CHERRY STREET, SUITE 200 | WINSTON-SALEM, NC 27101

P 336.722.1986 | F 336.723.3173