



M E R I D I A N

147 S. CHERRY STREET, SUITE 200 | WINSTON-SALEM, NC 27101 | P 336.722.1986 | F 336.723.3173 | MERIDIANREALTY.COM

Stratford Road Retail Lots

# Hillcrest Towne Center

Winston-Salem NC 27103



For more information:

**John L. Ruffin, CCIM**  
jruffin@meridianrealty.com  
336.480.2081

**Tiffany J. Secoges**  
Tiffany.s@meridianrealty.com  
336.480.2094

**FOR SALE: \$10.64 PSF**



Site Plan



No warranty or representation (express or implied) is made as to the accuracy or completeness of the information set forth herein. All information is submitted subject to errors, omissions, change of price, prior lease or sale, and withdrawal without notice. All marketing material produced by the Meridian Realty Group is proprietary. Any reproduction is expressly prohibited.



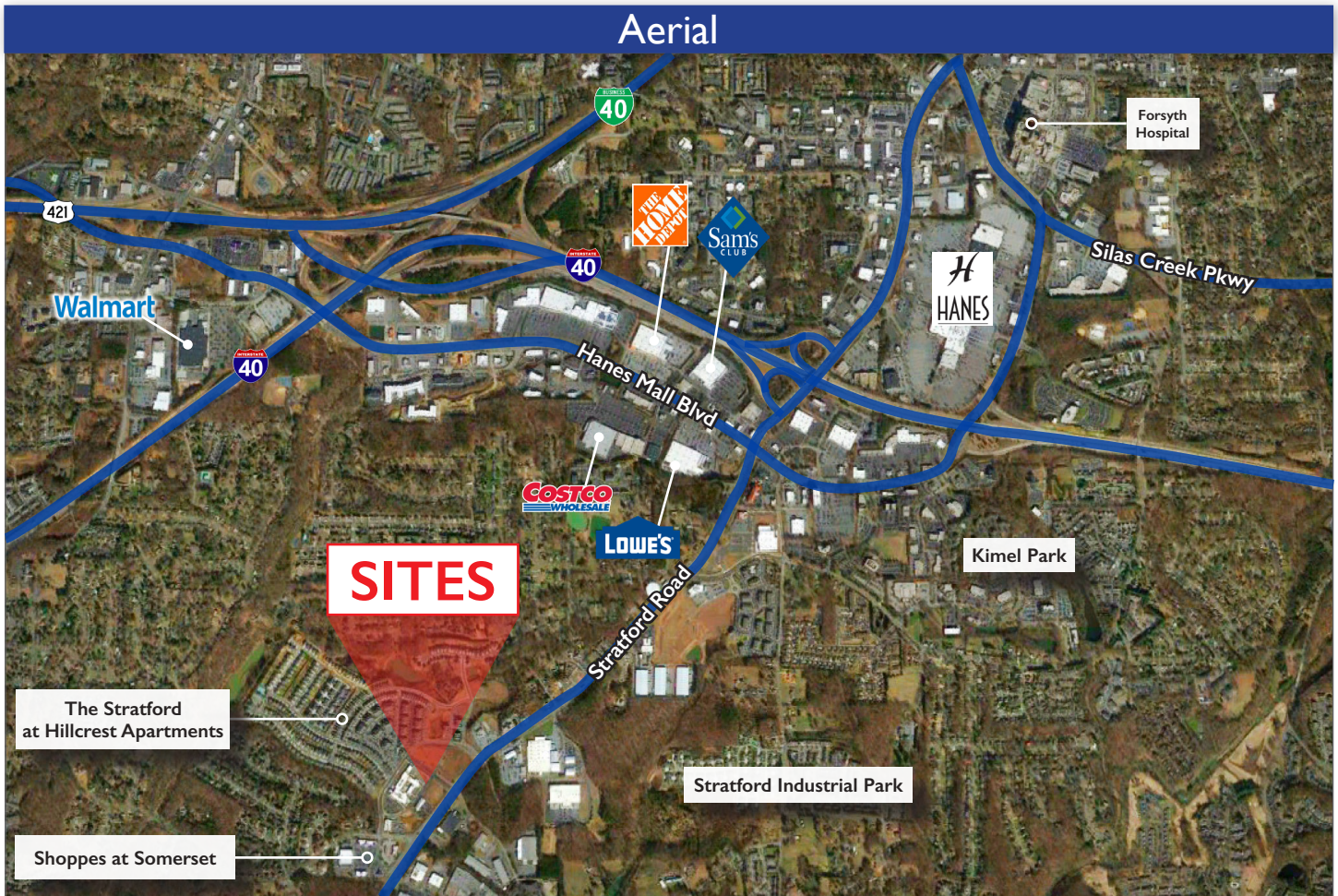
### Utilities



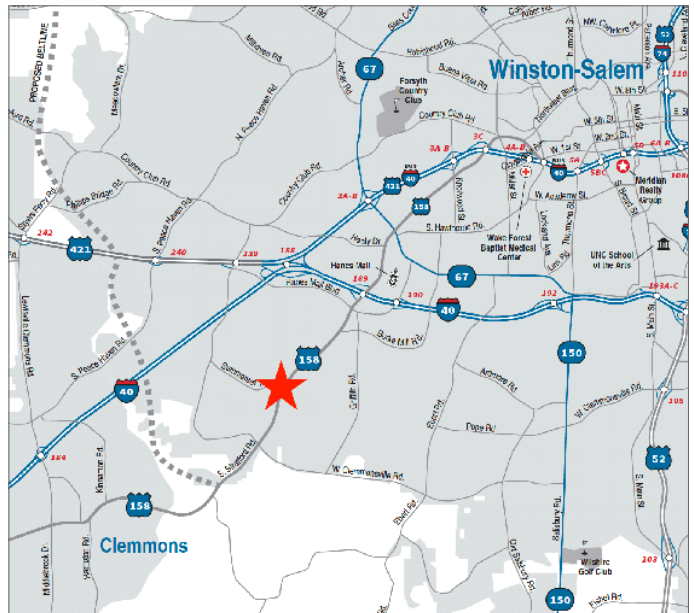
### Topography Map







- Two retail lots ranging from 1.58-1.78± AC
- Zoned MU-S, HB-S for business with utilities to sites
- Common stormwater in place
- Average daily traffic counts of 30,500± CPD on Stratford Road
- Signalized intersection
- Graded sites with paved streets
- For Sale: \$10.64 PSF



No warranty or representation (express or implied) is made as to the accuracy or completeness of the information set forth herein. All information is submitted subject to errors, omissions, change of price, prior lease or sale, and withdrawal without notice. All marketing material produced by the Meridian Realty Group is proprietary. Any reproduction is expressly prohibited.



THE MERIDIAN REALTY GROUP | 147 S. CHERRY STREET, SUITE 200 | WINSTON-SALEM, NC 27101

P 336.722.1986 | F 336.723.3173