



M E R I D I A N

147 S. CHERRY STREET, SUITE 200 | WINSTON-SALEM, NC 27101 | P 336.722.1986 | F 336.723.3173

21± ac Site Zoned Multi-Family

Murray Road

Winston-Salem, NC 27106



FOR SALE \$735,000

For More Information

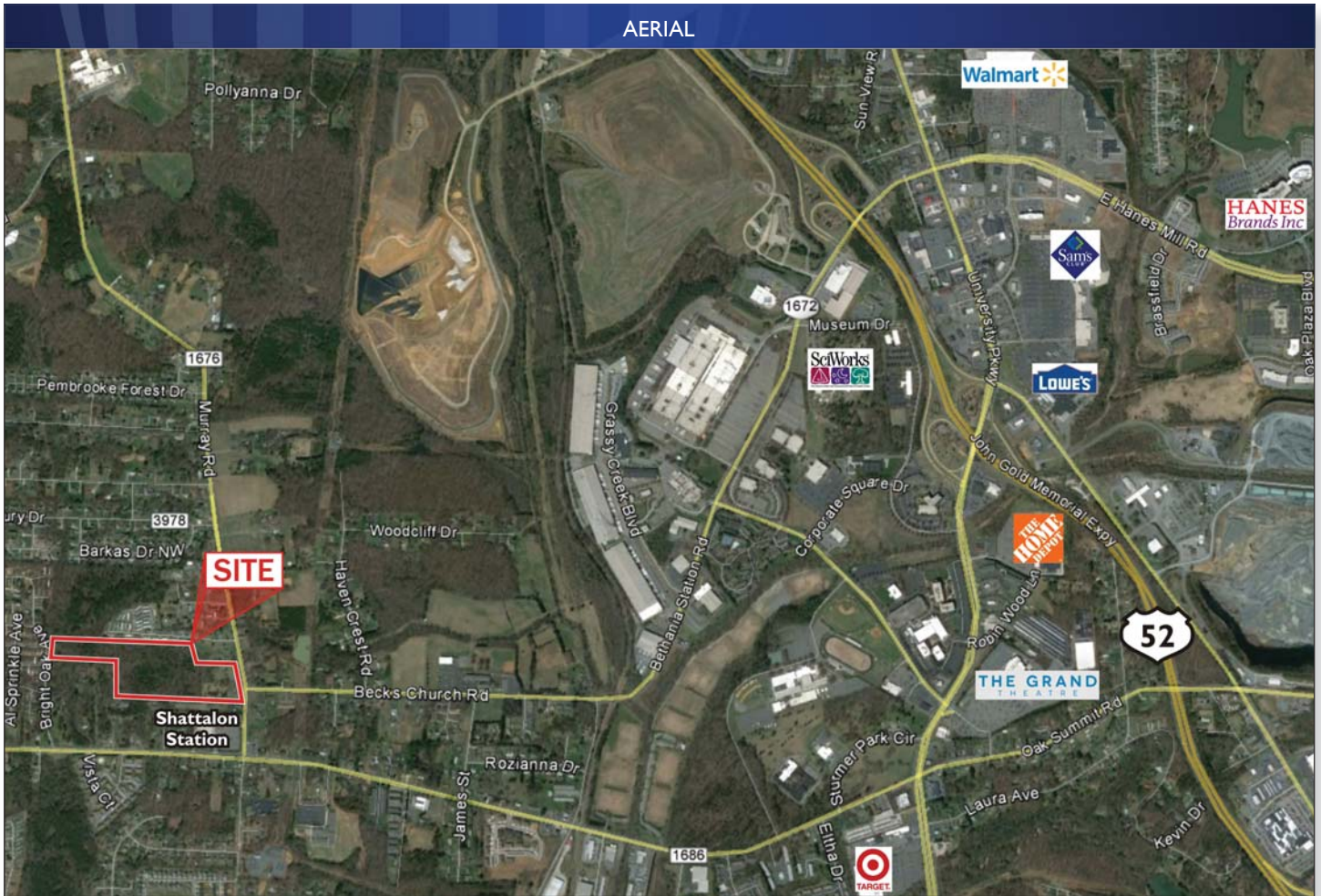
Charlie H. Fulk, CCIM

Cfulk@meridianrealty.com

336.722.1986

WWW.MERIDIANREALTY.COM

Murray Road | Winston-Salem, NC 27106



- 21± acres
- City water and sewer
- Located at T-intersection of Murray Road and Becks Church Road
- 433± road frontage on Murray Road
- Zoned Multi-Family
- Asking Price: \$735,000.00**
(\$35,000.00/acre)



No warranty or representation (express or implied) is made as to the accuracy or completeness of the information set forth herein. All information is submitted subject to errors, omissions, change of price, prior lease or sale, and withdrawal without notice. All marketing material produced by the Meridian Realty Group is proprietary. Any reproduction is expressly prohibited.



THE MERIDIAN REALTY GROUP | 147 S. CHERRY STREET, SUITE 200 | WINSTON-SALEM, NC 27101
P 336.722.1986 | F 336.723.3173